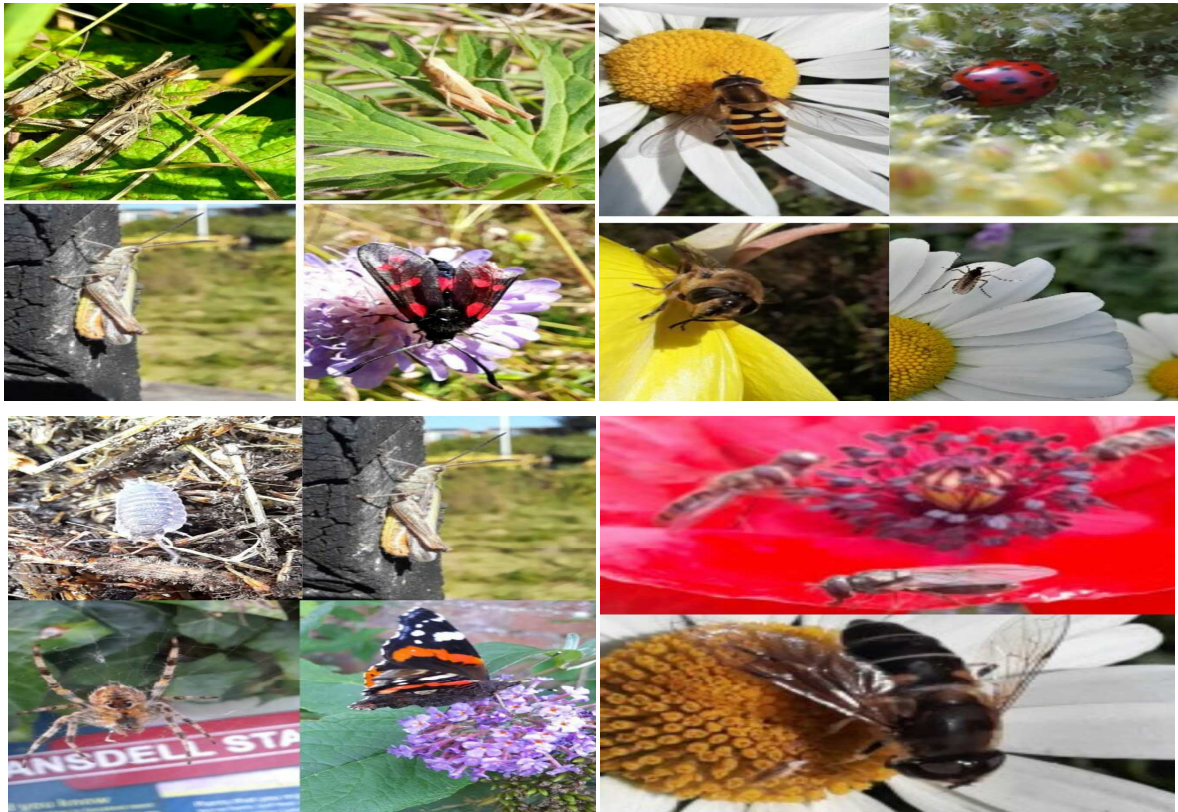




Friends of Ansdell & Fairhaven Station – Team Update (August - October 2024)

Summer was in full force throughout August, but kept temperatures buoyant through September and into early October with lots of colour and wildlife enjoying the plants and adding that extra edge to our care for wildlife and the station. There were grasshoppers, bees and various coloured ladybugs, spiders, hoverflies, butterflies. You will see the fruits of our labours for anyone to pick, maybe a peckish bird.



We also decided to install some new bird and bug boxes on the platform fence and trees. They had been carefully created by members of the team, and colours were vibrant, we just hope the occupants like the décor. The rental fee has been waived for the first year to see whether occupancy is favourable.

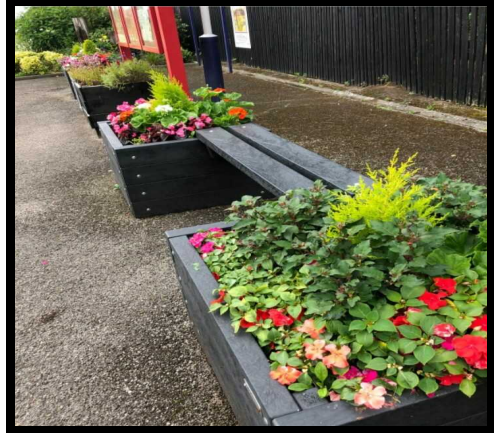


It's amazing how wonderful nature can be, a solitary poppy growing under the stairs in a dry arid tarmac surface and yet it produces such simple beauty. We also had a family of abandoned rabbits at the station which were all successfully found and rehomed.



The station always puts on a good show when it comes to colour and symmetry, whether its coloured leaf foliage or the bright colours of flowers with their many buds waiting to burst open aided by those who tend them and keep the ground around them weed free and the grass cut nicely where necessary.

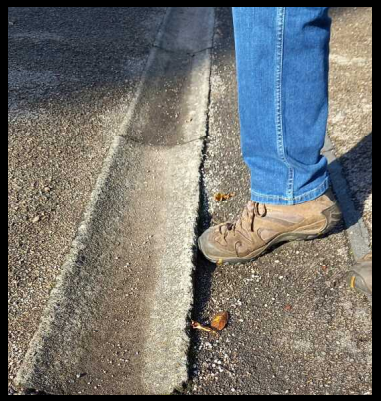
Lots of strange markings appeared on the platform, we assume they are for the new information board, with markings for underground cables etc.



The area where we removed the dead gorse bush and planted the two Rowan trees has now rewilded itself and plants that had been hidden because of lack of light were now appearing as you can see in the picture below, including poppies.



Mowing, sweeping, trimming hedgerows, tending plants always keeps the team busy, whilst also looking out for more insects and bugs. Chatting is an important feature of volunteering, the best aspect for socialising, along with refreshments which is always welcome. We also report hazards (now repaired) to avoid rail users injuring themselves.



Karen Cornforth

Friends of Ansdell and Fairhaven Station (November 2024)