

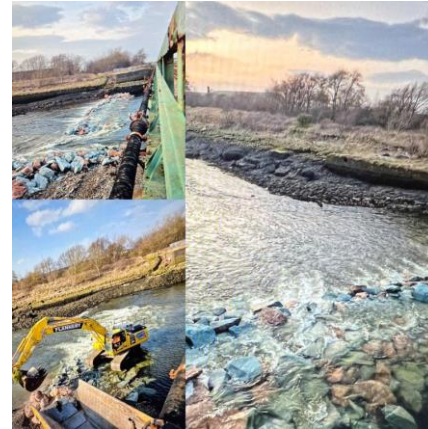
Northern Business Update

East Lancashire & Clitheroe Lines CRP AGM April 2024

Craig Harrop
Regional Director

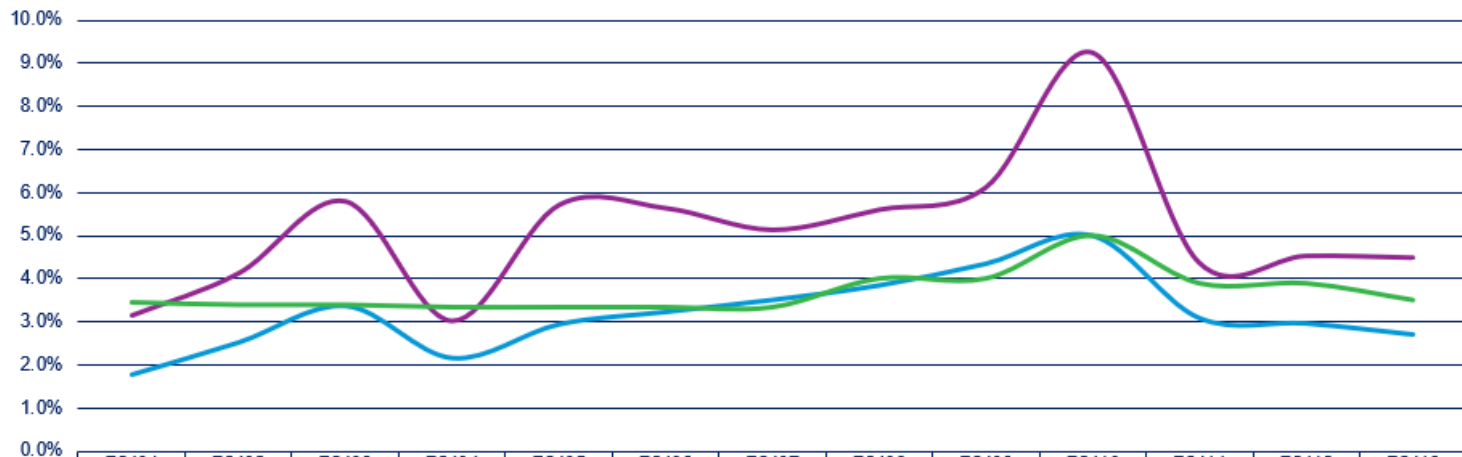
Short Term Priorities

- Sickness
- Skills
- Sundays
- Storms and Seasonal Resilience



Central Region Performance

Central Cancellations

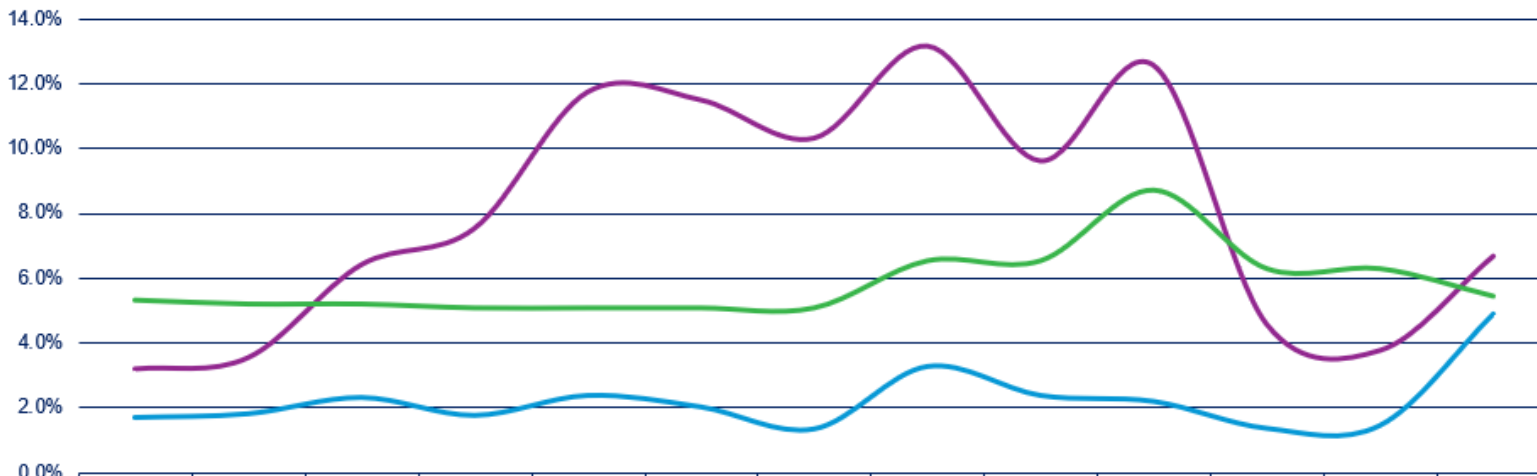


	P2401	P2402	P2403	P2404	P2405	P2406	P2407	P2408	P2409	P2410	P2411	P2412	P2413
Canc %	1.8%	2.5%	3.4%	2.2%	3.0%	3.2%	3.5%	3.9%	4.4%	5.0%	3.1%	3.0%	2.7%
Canc+P-codes %	3.2%	4.1%	5.8%	3.0%	5.7%	5.6%	5.1%	5.6%	6.1%	9.2%	4.4%	4.5%	4.5%
Target	3.5%	3.4%	3.4%	3.3%	3.3%	3.3%	3.3%	4.0%	4.0%	5.0%	3.9%	3.9%	3.5%

— Canc % — Canc+P-codes % — Target

West Region Performance

West Cancellations



	P2401	P2402	P2403	P2404	P2405	P2406	P2407	P2408	P2409	P2410	P2411	P2412	P2413
Canc %	1.7%	1.8%	2.3%	1.8%	2.4%	2.0%	1.4%	3.3%	2.4%	2.2%	1.4%	1.5%	4.9%
Canc+P-codes %	3.2%	3.6%	6.4%	7.6%	11.8%	11.5%	10.3%	13.2%	9.6%	12.6%	4.6%	3.8%	6.7%
Target	5.3%	5.2%	5.2%	5.1%	5.1%	5.1%	5.1%	6.5%	6.5%	8.7%	6.3%	6.3%	5.4%

— Canc % — Canc+P-codes % — Target

Key Priorities

- Accessibility
- Engineering Transformation
- People Agenda/Training
- Stations as a Place
- Train Replacement Programme
- Transpennine Route Upgrade



Work in Partnership with CRL



FOR MORE INFORMATION EMAIL: simon.clarke.crl@gmail.com
communityrailawards.crl.co.uk/awards-application



NORTHERN



Key Projects in Lancashire

- The Eden Project - Morecambe
- Cottam Parkway Railway Station
- Northern 2tph Clitheroe, Colne, Burnley Manchester Road studies
- Yorkshire Dales Explorer – Launching June 2024



**Enjoy a great day out
with our new Yorkshire
Dales Explorer service.**

Every Saturday from 08 June 2024.

A new Saturday service connecting Rochdale, Manchester, Salford, Bolton and Clitheroe with Settle, Horton-in-Ribblesdale, Ribbleshead and the Yorkshire Dales.

Scan the QR code to find out more.

 NORTHERN

Go do your thing

Any Questions ?