

# East Lancashire & Clitheroe Line CRPs

## Activity Plan Report

### 27<sup>th</sup> September, 2023



#### Key Updates:

The "**On Track – A Glimpse into Lancashire's Railways Past and Present**" exhibition at Clitheroe Castle Museum continues to be popular and has been extended to 31<sup>st</sup> January 2024. Toys, artefacts and photographs of railways past and present have been displayed in the Steward's Gallery and a range of talks on specific railway topics given. The exhibition has built on previous "Take the Train to Clitheroe Castle" initiatives with local school groups. The exhibition has been extended until January 2024 see <https://communityrailancashire.co.uk/news/on-track-exhibition-extended-to-january-2024/>

The Church and Oswaldtwistle "**This is Us!**" project has been developed with St Pauls CE and Hippings Methodist Primary School Year 5 children with the kind support of the Rotakids project run by the local Rotary Club. The schoolchildren have produced artwork with local artist Alastair Nicholson highlighting the parts of Church and Oswaldtwistle that they identify with, taking inspiration from their own points of view.

'This Is Us' was successfully launched at the station on Thursday 14<sup>th</sup> September. Special thanks go to many people but especially to Caroline Holden, Cath Heap, Alastair Nicholson and the pupils and staff from Hippings and St Paul's primary schools. We look forward to working with the other two schools.



The **Accrington Eco Station** project is progressing well with a new display due to be out up at the station during September. For more information go to: <https://communityrail Lancashire.co.uk/accrington-eco-station/>

There have also been developments on the platform as the following two pictures illustrate.



The **Community Rail Events Guide** has been updated to include a wider range of events reachable on the East Lancashire and Clitheroe Lines, including regular weekend events in the Ribble Valley and popular local events including the Great British Rhythm and Blues Festival in Colne (late summer holiday Bank Holiday weekend) and the new CRL guided walk programme for the 2023 summer and autumn period. The latest programme can be viewed at <https://communityrail Lancashire.co.uk/wp-content/uploads/2014/06/CRL-Guided-Walks-Leaflet-Jun-Dec23.pdf>

Input has been provided into the **East Lancashire demand forecasting studies** produced by Northern Trains in partnership with Lancashire County Council, District Councils and Community Rail Lancashire. The studies have included potential future service improvements on the Clitheroe Line and Roses Line for future consideration by the Rail North Partnership.

CRL has also been involved in discussing the future of **DalesRail** with LCC, NYCC, Northern, DfT and the Rail North Partnership.

The **national ticket office closure consultation** was discussed with CRP Management Meeting attendees in July. Four ticket offices have been identified for closure including Accrington, Burnley Manchester Road, Burnley Central and Preston, with Blackburn remaining open. Impacts on equality, equity and disability were highlighted and have fed into consultation responses compiled from Community Rail Lancashire and Lancashire County Council. Encouragement was also given for Rail User Groups, Friends of Stations and District Councils to also reply to the Transport Focus consultation. It is understood that over 680,000 responses were made – clearly demonstrating the need for further thought about this issue.

I can forward the responses made by CRL to both the Northern and Avanti West Coast consultations.

On the **Autism Friendly Line** (Blackburn to Manchester via Todmorden) CRL recently received the Autism Friendly Award see <https://communityrail Lancashire.co.uk/news/autism-friendly-award-success/> for more information.



To find out more about the Autism Friendly Line project go to:  
<https://communityraillancashire.co.uk/autism-friendly-line/>

**Let's Connect Communities** an initiative between the ELCRP, CRL and LCC is supporting 9 projects across East Lancashire. Over £19,000 in grants has been awarded to community groups including the Saliheen Scouts, the Brave Church, the Chattering Chimmers CIC, Community Solutions NW, Arts2Heal and Huckleberry Films. A full report on the progress of this project is attached.



**Chattering Chimmers at Burnley**



## Community Solutions

474 followers  
12h • 🌐

+ Follow

🚀 Our staff, participants, and volunteers have recently been enjoying trips across Lancashire!

The grant from Community Rail Lancashire, 'Let's Connect Communities' fund has allowed us to support our participants to use public transport and take them on trips visiting different museums and attractions across the rail network. 😊

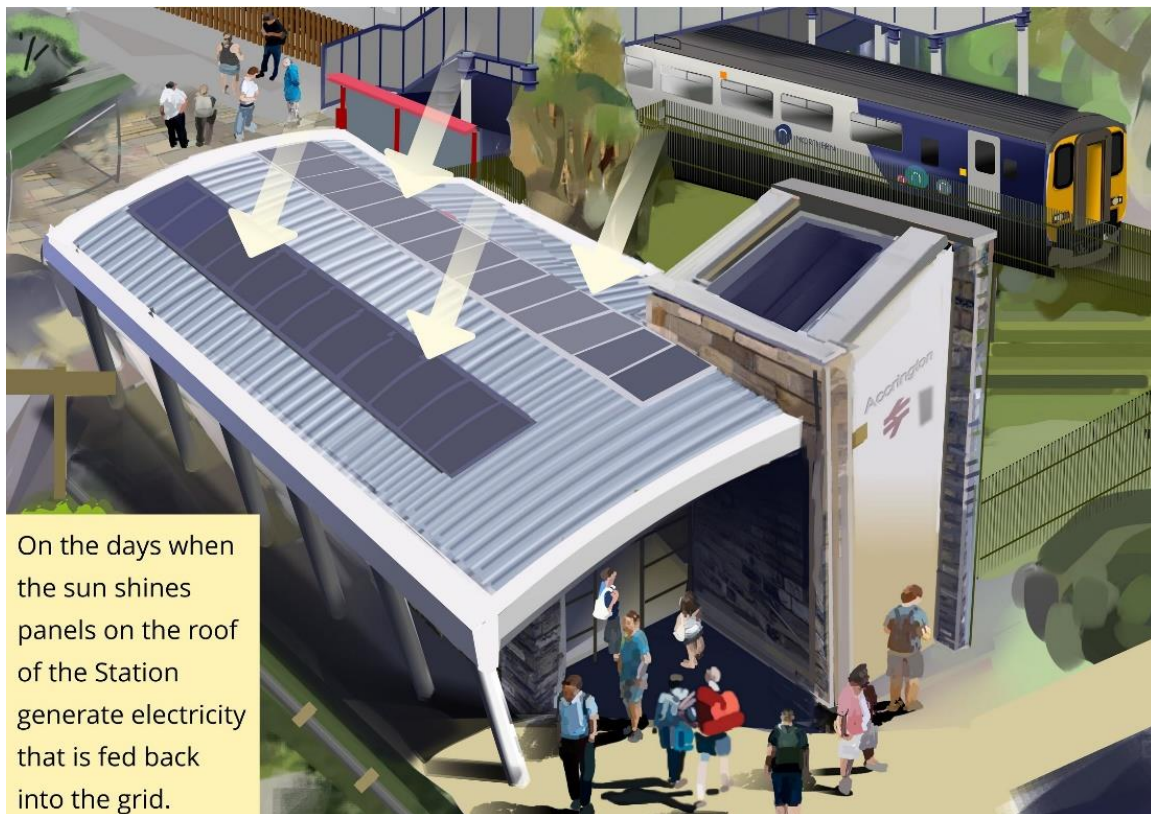
Thank you to Community Rail Lancashire and Connecting East Lancashire. 🙌

[#nonprofit](#) [#charity](#) [#donate](#) [#community](#) [#love](#)



## Coming up:

- Development and production of a new line guide covering the Clitheroe Line called '**Discover the Clitheroe Line**', giving ideas for journeys and destinations reached via stations on the line. The South East Lancashire CRP has offered to help with the project. Members of the Management Group also offered help including RVBC and LCC.
- Launch of the '**Steam to Green**' artwork at Accrington station on the 27<sup>th</sup> September.
- Installation of the **Accrington Eco Station display panel**. The artwork for this is being developed by Alastair Nicholson and aims to show the eco features used in the construction and the on-going operation of the station. The following picture shows a sample of the artwork being developed.



**Solar energy at Accrington**

- Nelson subway artwork project to help tackle anti-social behaviour at the station with local college and community groups.
- **Stations of Welcome:** continued development and activities at stations and on the railway with the widest range of residents and service users.

- **The guided walk programme** continues so check the website for details of walks in East Lancashire, Ribble Valley and elsewhere!  
<https://communityraillancashire.co.uk/wp-content/uploads/2014/06/CRL-Guided-Walks-Leaflet-Jun-Dec23.pdf>
- **Re-accreditation** of the 2 CRPs has been arranged for **Thursday 5<sup>th</sup> October**. Accreditation must be renewed annually and the CRL Team is working towards achieving accreditation again.
- Member of the CRL team will be attending the Community Rail Network and DfT **Community Rail Conference** taking place on the **13<sup>th</sup> and 14<sup>th</sup> November** in Nottingham.
- The CRPs continue to be represented on **ComREG** by Richard Watts. The next meetings are planned for 8<sup>th</sup> November 2023 and 3 January 2024.
- Richard Watts also attends the quarterly DfT **National Community Rail Steering group**.
- Completion of the **‘Let’s Connect Communities’** projects and preparation of the end of project report. Develop plans for 2024.



**Hippings School in the bunker taking Part in the ‘This is Us’ project**



**Whistle the Dog at Clitheroe Castle**