



East Lancashire and Clitheroe Line CRPs Action Plan Update 11th January 2023



Marjorie Birch
1945 to 2022



Marjorie Birch
28th August 1945 – 10th December 2022



Friday 23rd December 2022 at 11am
Christ Church, Chatburn



AP1 Development

- **Staffing:**

CRL welcomes Catherine Kingdom to the team. Karen Bennett is working 3 days a week for the Community Rail Network starting from the 1st January 2023.

- **ComREG 14th December 2022**

The highlight of the last ComREG meeting was the approval of a seed corn bid for the 'Steam to Green' project prepared by Caroline Holden. The project is part of the Accrington Eco Hub Project and is being done in conjunction with a local high school.

The meeting also discussed the next 4 Year Strategic Education Plan. More about that later.

- **Activity Plan 2023**

The 2023 draft CRP Activity Plan has been circulated for comment.



We welcomed Sara Britcliffe, MP, to the Bunker on the 4th November



AP 2: Finance

Core Funding 2022 to 23

Source	Amount £
Northern	62,006
Trans Pennine	1,137
Avanti (pro rata)	3,580
Total	66,723

Project Funding 2022 to 23

Project	Budget £	Grant £	Outturn £	Notes
Preston station 3c & 4c	9,950	9,950	9,950	Project being led by LCC with the grant transferred to LCC.
Lancashire Connects Football Communities	1,500	1,500		Completed
Church & Oswaldtwistle pocket map	2,475	2,475	2,475	Completed
Making Connections	53,720	53,720		On-going
Mini timetables	1,000	450		May completed Dec in preparation
DalesRail	2,500		2,448	Completed
Blackburn subway	10,972	SAF £3,500 CRDF £2,740 DfT (TLwT) £4,732		On-going
East meets West	2,196	£2,196 CRN small grant	£2,196	Completed
Burnley Central (apprentice project)	1,000	1,000 SAF		On-going
Steam to Green	14,300	Seed corn: 9,950 CRL: 4,350		



AP 3: Train Service Developments

Developing East Lancashire Rail Services

- LCC in partnership with CRL, Blackburn with Darwen Council, Ribble Valley Borough Council and Burnley Council has commissioned Northern to look at the scope to improve the following services:
 - ✓ Blackpool North/Preston to Leeds/York via Blackburn, Accrington and Burnley Man Rd
 - ✓ Blackburn to Manchester/Kirkby – the Todmorden Curve
 - ✓ Clitheroe to Rochdale
 - ✓ Options for the development of services north of Clitheroe (following on from the Restoring Your Railway (RYR) bid.

May 2023

- New timetable introduced from 11th December 2022
- CRL will continue to discuss timetable developments with LCC and RNP in the lead up to May 2023.



AP 4: DalesRail

DalesRail has been badly affected over the last 2 years by the impact of Covid so the opportunity is being taken to look afresh at the service. More information soon.





AP5: Station developments

Preston station: platforms 3c & 4c

- Further work is required before the improvements can be delivered.
- LCC has commissioned this prior to submitting the plans for Landlords Consent.

Accrington:

Accrington Eco Hub: this is a new project for 2023 which aims to build on the eco credentials of the station through the development of educational resources for use with schools, community groups etc.

Access for All (AfA)

- AfA schemes have been submitted for Accrington, Rishton, Church & Oswaldtwistle, Rose Grove, Whalley, Langho and Ramsgreave & Wilpshire. Decisions on these are awaited.
- The AfA scheme at Burnley Manchester Rd continues to make progress.

Other projects:

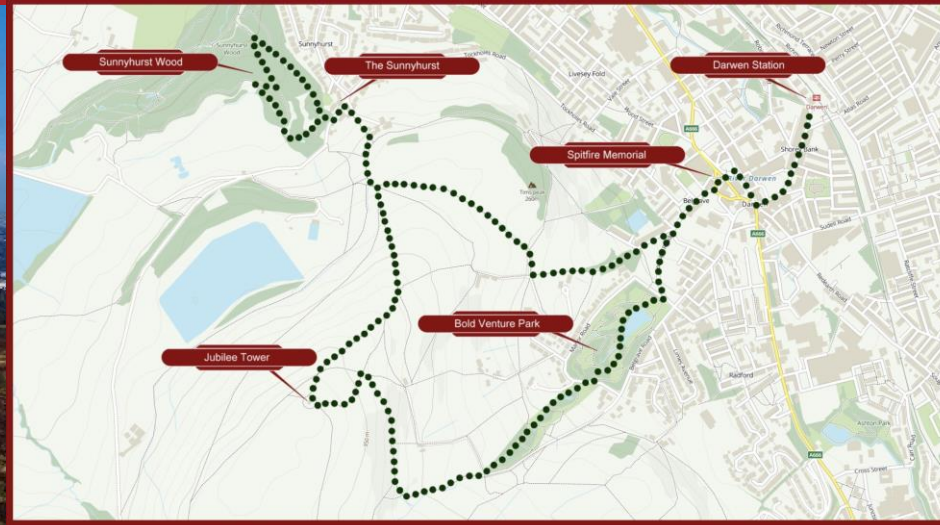
- Clitheroe Castle project – rail themed displays leading up to a special event day on the 15th February.
- Nelson – looking at ways to tackle ASB.



AP 6: Marketing & Promotion (I)

Explore Lancashire by Rail:

- New film launched exploring a walk from Darwen station to Darwen Tower. To view it use this link: https://www.youtube.com/watch?v=SmdTWnEX_yk&t=2s
- All the films in this series can be viewed at <https://communityrail Lancashire.co.uk/lancashire-by-rail/>
- New for 2023 a walk from Clitheroe Interchange.





AP 6: Marketing & Promotion (2)



Darwen Asylum and Refugee Enterprise (DARE)

brought some seasonal cheer to passengers along the Clitheroe line on Wednesday 20th December 2022, as they travelled from Darwen & Blackburn to Clitheroe distributing gifts and cards to everyone.

Thanks to Martin Keating for his help in facilitating this and to Shahiesta Raja who works with many refugee groups and Accompanied this group to Clitheroe.

For the full story see:

<https://communityraillancashire.co.uk/news/santa-on-the-clitheroe-train/>





AP 6: Marketing & Promotion (3)



Guided walks:

- A new programme of guided walks from the East Lancashire & Clitheroe Lines starts on the 17th January. Full details can be found on the CRL website along with the new leaflet which can be downloaded – use the link below:
<https://communityraillancashire.co.uk/walks/guided-walks-2/>
- The walks are led by volunteer walk leaders from the Lancashire Rail Ramblers

Mini timetables and posters

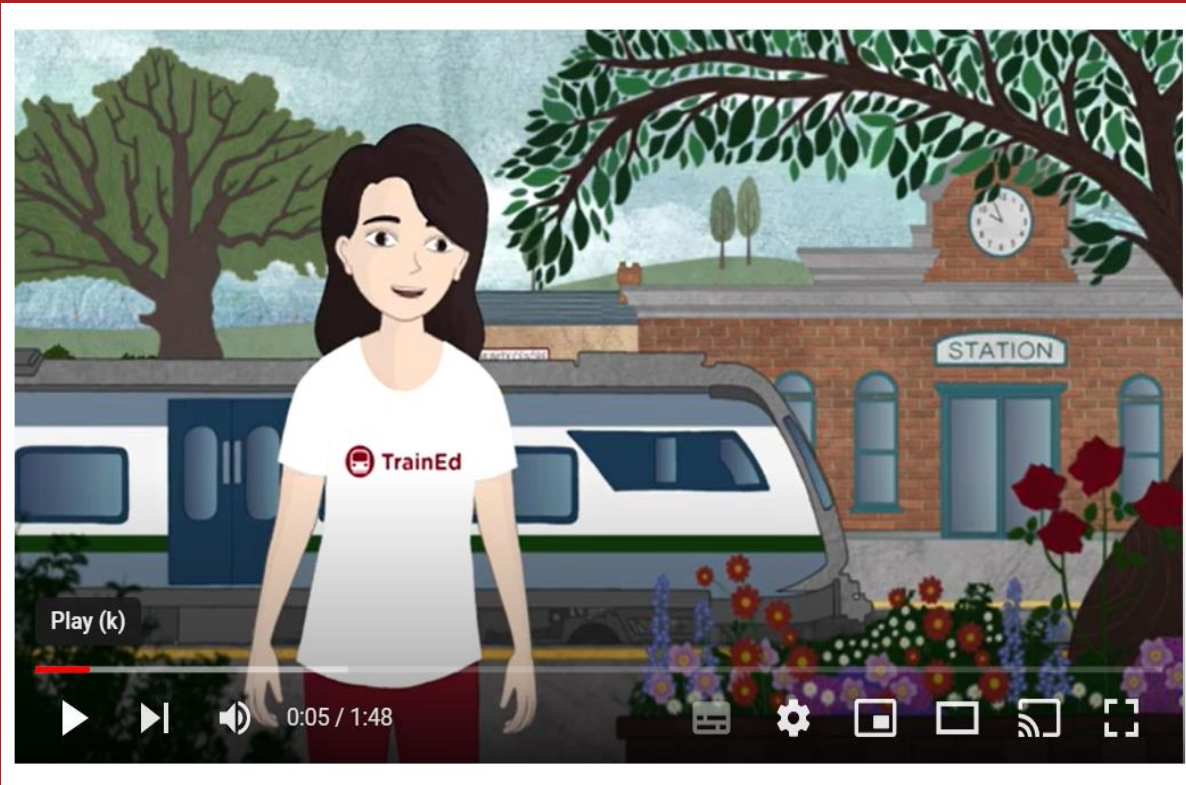
- Mini timetables for the Todmorden Curve and Clitheroe Line have been produced And are being distributed by volunteers and can be picked up from Accrington and Burnley Manchester Rd stations.
- A poster has also been produced for the Todmorden Curve service.

Future events:

Community Rail Week in May



AP 7: Web development



Coming up:

- The new TrainEd education website which replaces Down The Line.
- It includes an introductory video and lots of resources as well as a special area for the education Network.

Take a look at www.trained.website



CRL Web statistics 1st October 2022 – 27 December 2022

Users	4,942
Visits	6,019
Page views	10,499

Top 10 pages

1. Home
2. Bentham Line
3. DalesRail
4. News
5. Clitheroe Line
6. News/Clitheroe-station- parking
7. Guided Walks
8. Lines
9. East Lancashire Line
10. Lancashire by Rail



AP8 & 9

See the Education Update Report which covers developments on a number of projects in East Lancashire Including:

- ✓ **The Autism Friendly Line** (Blackburn to Manchester via the Todmorden Curve)
- ✓ **Making Connections** – based in the Blackburn area this is one of three pilots looking at how to tackle Loneliness with Transport. This is a DfT funded project co-ordinated by the Community Rail Network
- ✓ **Feel Good Field Trips** – a project being delivered on behalf of Acvanti West Coast
- ✓ **Try The Train** – CRL working in partnership with PWLC is delivering this on behalf of Northern
- ✓ **Stations of welcome**
- ✓ **Refugee Railway Support Programme**